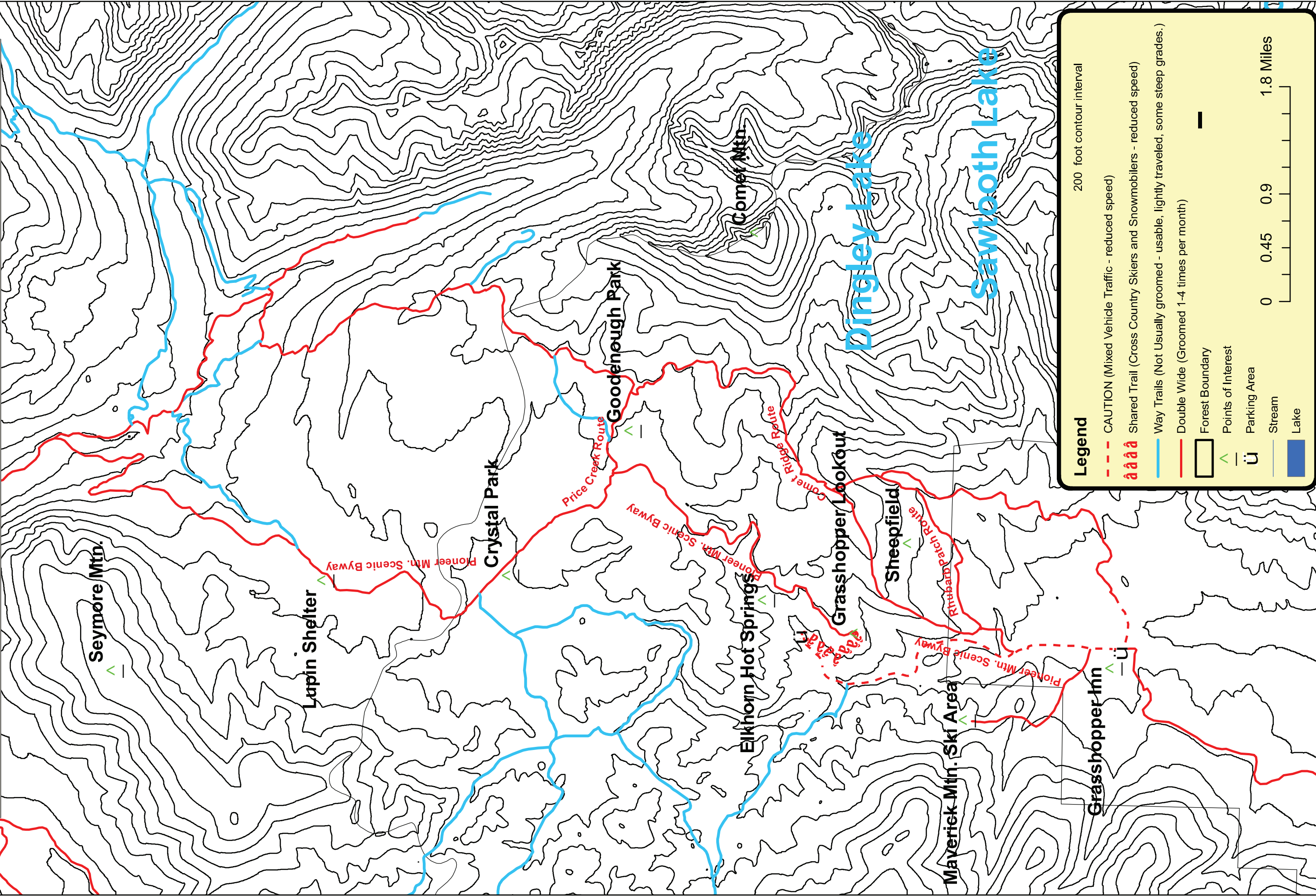


Pioneer Mtn. Snowmobile Routes Groomed Trail Updates, Grasshopper Inn to Mono Creek



Legend

200 foot contour interval

- - - CAUTION (Mixed Vehicle Traffic - reduced speed)
- ◊◊◊ Shared Trail (Cross Country Skiers and Snowmobilers - reduced speed)
- Way Trails (Not Usually groomed - usable, lightly traveled, some steep grades.)
- Double Wide (Groomed 1-4 times per month)
- ▭ Forest Boundary
- ◁ Points of Interest
- ⊔ Parking Area
- Stream
- Lake

